



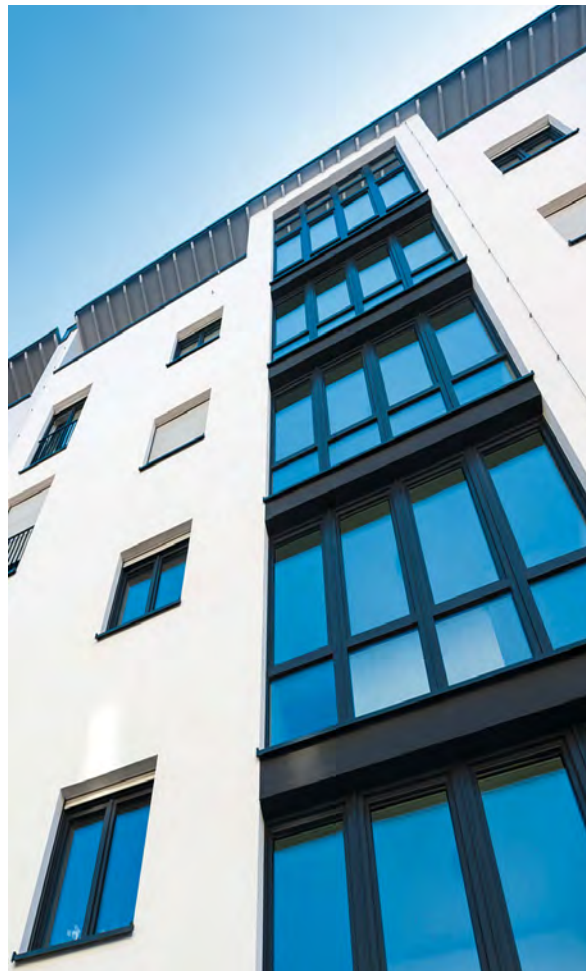
The sealing tape for the interior and exterior – pintaband B300 BG2 , driving rain resistant up to 450 Pa

The pintaband B300 BG2 is a joint sealing tape consisting of impregnated foam. It is utilized in the interior and exterior sealing of joints and connections against driving rain tested up to even 450 Pa in window construction, as well as the entire sector of building construction.

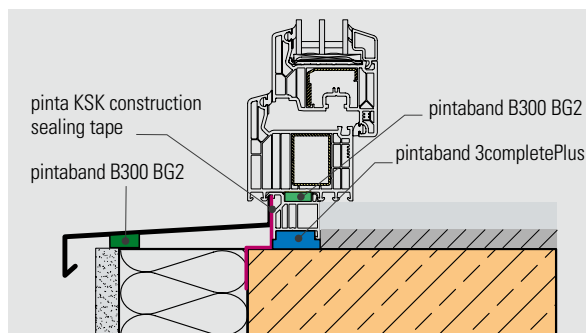
Due to its special properties, it is particularly useful for the coupling in window frames. The simple installation enables a fast and efficient sealing, even with complicated connections.

Areas of application

- Window and interior construction
- Façade engineering, wood and metal construction
- Concrete and dry-walling
- Pre-fabricated housing, container and roof construction etc.

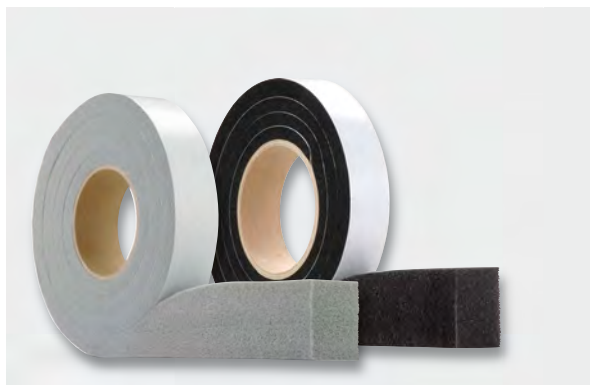


Application sketch



>> | Are you familiar with the alternative?

- pintaband D600 BG1 – the sealing tape for the exterior, directly exposed to weather, according to standard DIN 18542 BG1



Colour / Delivery forms

- grey, black
- pre-compressed onto a roll

Characteristics*

- Reaction to fire according to DIN 4102-1 B2, ABP-Nr. P-NDS04-1045
- open to water vapour diffusion acc. to DIN 18542 BG2
- driving rain resistant ≥ 450 Pa
- consistent quality guaranteed through regular third-party- and self-monitoring

Product advantages*

- seals against driving rain, wind, dust and water spray
- heat insulating and sound absorbing (59 dB)
- controlled expanding behaviour

Processing

The joint edges need to run parallel. Measure the width of the joints and choose the appropriate tape size in compliance with the joint tolerance determined and any joint movement (if necessary use several tape sizes). As far as the joint depth is concerned, please note that the tape has to be laid inwards by 2 mm from the front edge of the joint for safety reasons.

If installed in joints underlying particularly high strains (parking decks, sewage plants, bridge construction etc) please provide us with the appropriate details, so that we may provide you with the corresponding technical support.

* The characteristics are partially dependent on the amount of pressure applied. See separate handling and installation instructions.

Technical data

Characteristics	Classification	Norm
Foam base	Polyurethane flexible foam	
Basis of impregnation	special flame-resistant acrylate	
Joint permeability coefficient (a-value), air-tightness	$a \leq 1.0 \text{ m}^3 / [\text{h} \cdot \text{m} \cdot (\text{daPa})^2]$	DIN EN 12114
Driving rain resistance	DIN 18542 BG2 up to 450 Pa	DIN EN 1027
Temperature-change resistance	- 20 °C to + 60 °C	DIN 18542 BG2
Compatibility with other building materials	Requirements fulfilled	DIN 18542 BG2
Construction material class/reaction to fire	B2 (normal flammability), ABP-No. P-NDS04-1045	DIN 4102-1
Water vapour permeability, SD-value	< 0,5 m	EN ISO 12572
Storage time	1 year at room temperature < 20 °C in original packaging	

The technical data may vary, depending on the degree of pressure applied.

Tape sizes / Delivery forms

Order identification	Strip width/joint depth [mm]	for joint width [mm]
10 / 2-3	10	2 – 3
15 / 2-3	15	2 – 3
10 / 3-5	10	3 – 5
15 / 3-5	15	3 – 5
10 / 3-6	10	3 – 6
15 / 3-6	15	3 – 6
15 / 4-8	15	4 – 8
20 / 4-8	20	4 – 8
15 / 5-10	15	5 – 10
20 / 5-10	20	5 – 10
15 / 7-12	15	7 – 12
20 / 7-12	20	7 – 12
25 / 9-15	25	9 – 15
30 / 9-15	30	9 – 15
25 / 10-18	25	10 – 18
30 / 10-18	30	10 – 18
30 / 14-24	30	14 – 24
40 / 14-24	40	14 – 24

Additional sizes available upon request. Dimensional tolerance according to DIN 7715 P3.

Copyright © pinta abdichtung gmbh. Manufacturer's specifications dated: 09/2017. Picture credits: P. 1 top left © Magda Fischer/Fotolia.com, p. 1 top right © Tiberius Gracchus/Fotolia.com. The specifications are laboratory values, and may deviate from the actual values during installation. They do not guarantee any product properties. The detail diversity and combination possibilities cannot all be covered in this manual. (Alt: brochure). The user shall be obliged to obtain accurate information. A specific work result cannot be guaranteed, due to the lack of transparency of the working conditions. We recommend test applications to ensure best possible results. Previous editions become invalid with the issue of this data sheet. Our general terms and conditions apply. All rights are reserved to modify the product at any time in order to incorporate the latest technological progress and developments (31.10.2021).

>> | Contact details

- we gladly provide individual advice – please don't hesitate to call our service hotline

pinta abdichtung gmbh
Kreuzbreite 4
31675 Bückeberg, Germany
phone +49 (0) 57 22. 89 36 - 0
fax +49 (0) 57 22. 89 36 - 16
sales@pinta-abdichtung.com
www.pinta-abdichtung.com